

PrEP Implementation in Thailand

Nittaya Phanuphak, MD, PhD

PREVENTION | The Thai Red Cross AIDS Research Centre

PrEP Consultation
Wednesday 11 October 2017
Hospital for Tropical Diseases, Bangkok, Thailand

Disclaimer: This presentation is the Intellectual Property of Thai Red Cross AIDS Research Centre. It is intended for the use of meetings only. No part of this presentation may be reproduced, republished, distributed, displayed, transmitted or otherwise exploited in any form or by any means, electronic or mechanical, including photocopying, recording, or any information storage and retrieval system, without the prior direct permission in writing from Thai Red Cross AIDS Research Centre."

Thailand's PrEP Programs

iPrEX showed 44% prevention efficacy among MSM with daily TDF/FTC

The 1st Test & Treat project in MSM and TGW in 4 provinces

NOV.
2010

DEC.
2012

JUL.
2011

OCT.
2014

HPTN 052, 96% prevention efficacy with immediate ART

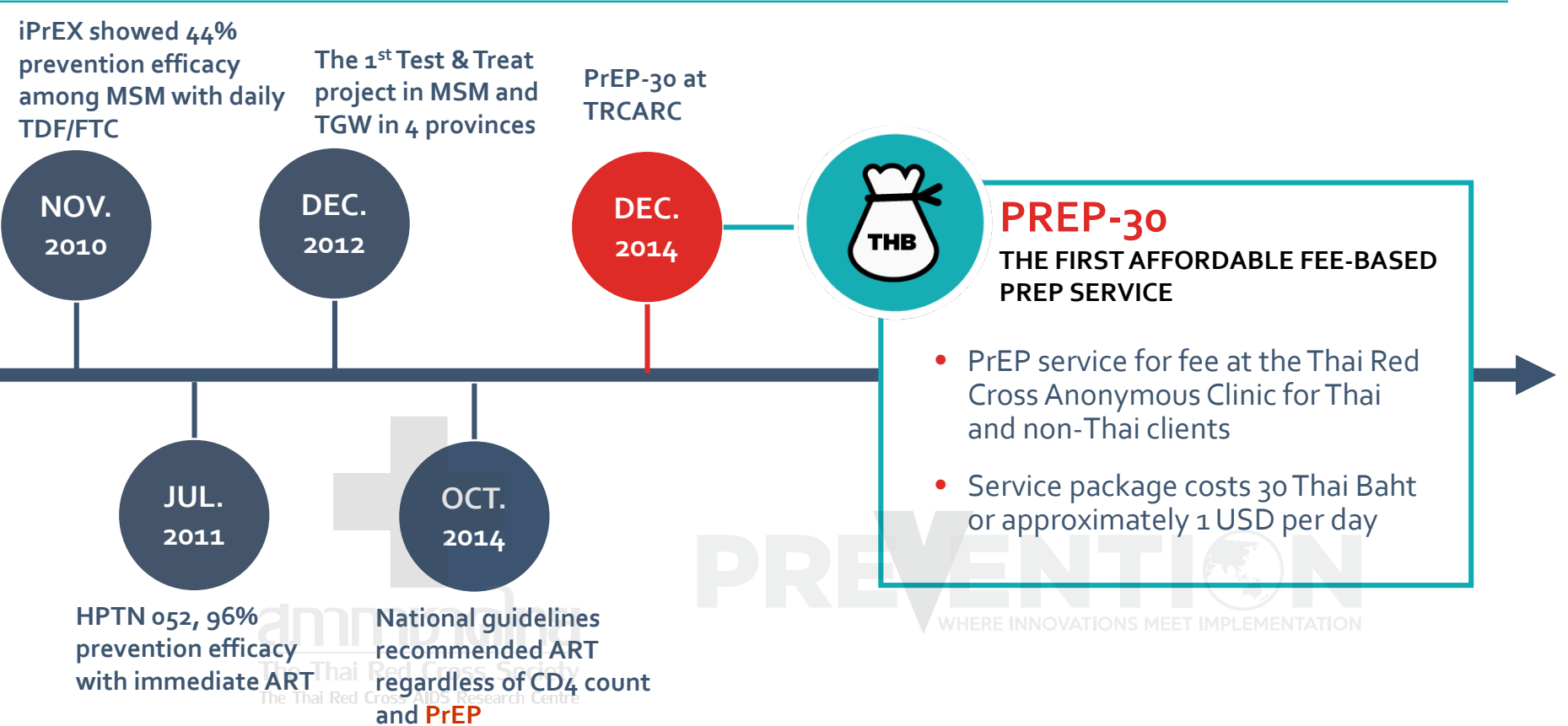
National guidelines recommended ART regardless of CD4 count and PrEP



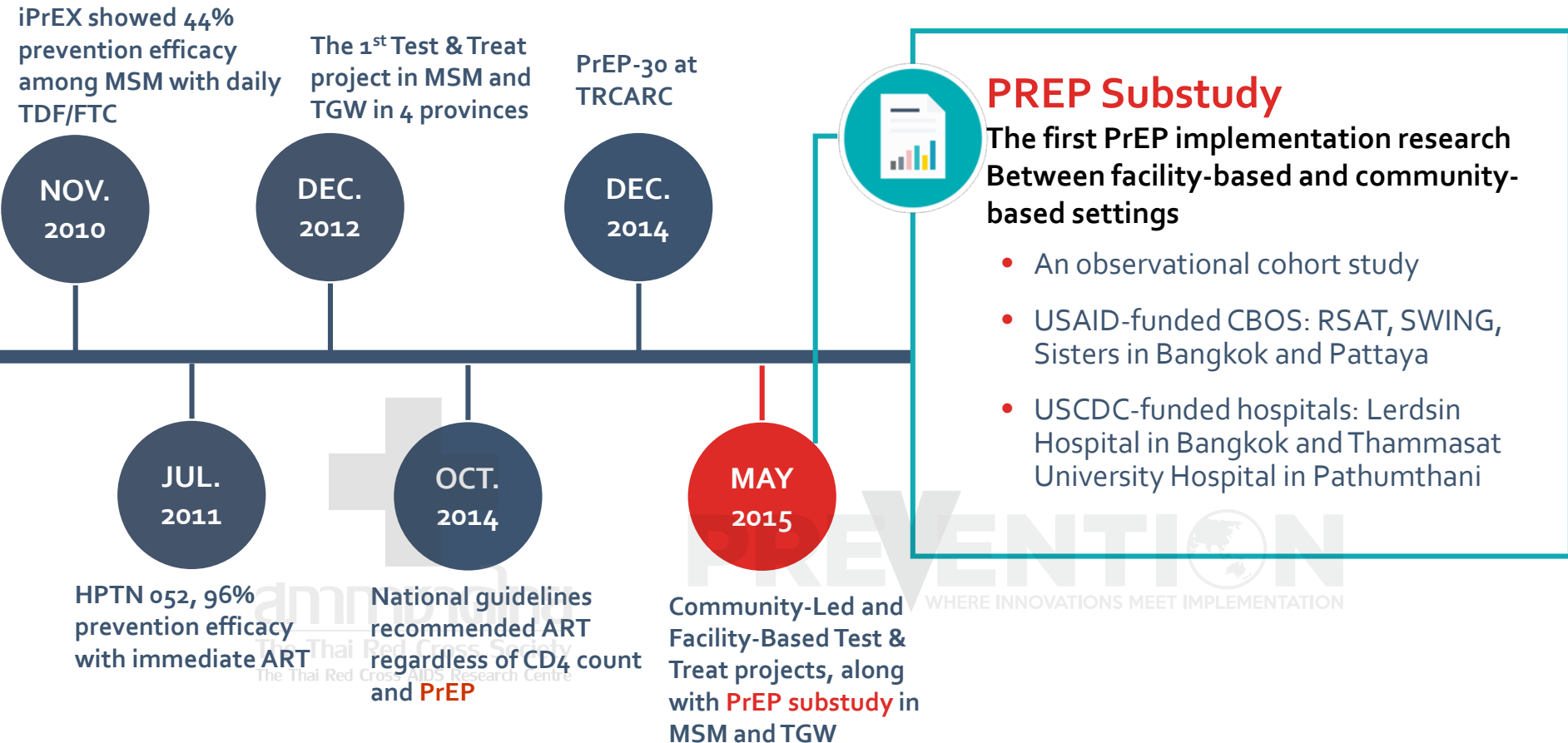
• ART is free but PrEP is not free under the National Health Care Schemes in Thailand

• Generic TDF/FTC drugs are available at USD 18-22 per month

Thailand's PrEP Programs



Thailand's PrEP Programs



Thailand's PrEP Programs

iPrEX showed 44% prevention efficacy among MSM with daily TDF/FTC

The 1st Test & Treat project in MSM and TGW in 4 provinces

PrEP-30 at TRCARC

Princess PrEP

NOV.
2010

DEC.
2012

DEC.
2014

JAN.
2016

JUL.
2011

OCT.
2014

MAY
2015

HPTN 052, 96% prevention efficacy with immediate ART

National guidelines recommended ART regardless of CD4 count and PrEP

Community-Led and Facility-Based Test & Treat projects, along with PrEP substudy in MSM and TGW



The Princess PrEP

The first key population-led PrEP initiative under the royal patronage

- Use Thai Red Cross public donation fund and USAID LINKAGES funding to scale-up KP-led PrEP services in CBOs
- Aims to serve 1,000 PrEP users per year for 3 years
- Started with MSM and TGW, being expanded to FSW and PWID
- Will focus more on 15-19 years old in FY2018

Thailand's PrEP Programs

iPrEX showed 44% prevention efficacy among MSM with daily TDF/FTC

The 1st Test & Treat project in MSM and TGW in 4 provinces

PrEP-30 at TRCARC

PrEP@Piman Princess PrEP



PrEP@Piman

The PrEP implementation research focused on MSM and TGW in Chiang Mai

- A research-based program at Piman Clinic by Chiang Mai University's RHES
- Aims to enroll 100 MSM and TGW and study uptake of PrEP and retention in PrEP program

NOV.
2010

DEC.
2012

DEC.
2014

JAN.
2016

JUL.
2011

OCT.
2014

MAY
2015

HPTN 052, 96% prevention efficacy with immediate ART

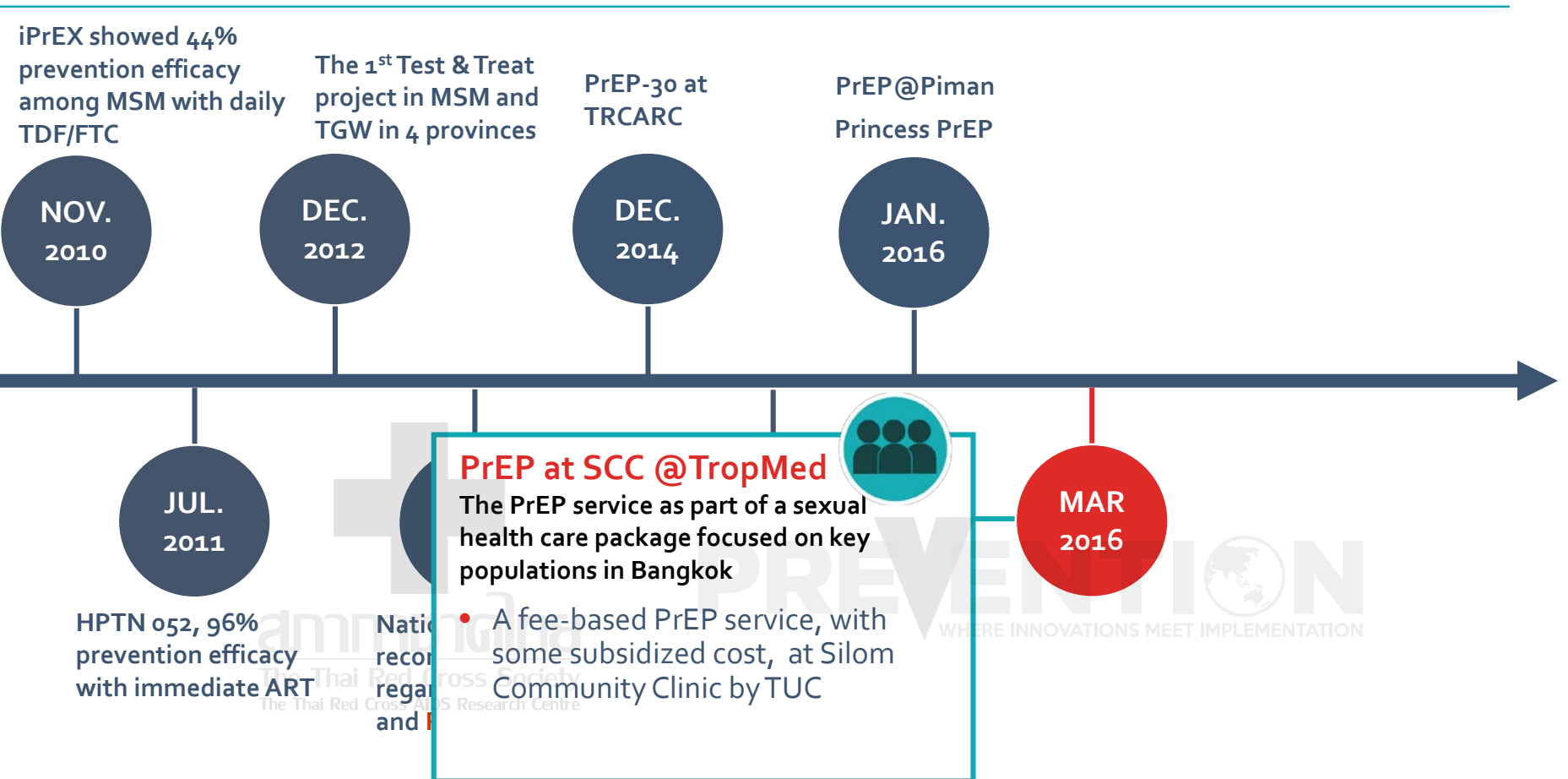
National guidelines recommended ART regardless of CD4 count and PrEP

Community-Led and Facility-Based Test & Treat projects, along with PrEP substudy in MSM and TGW

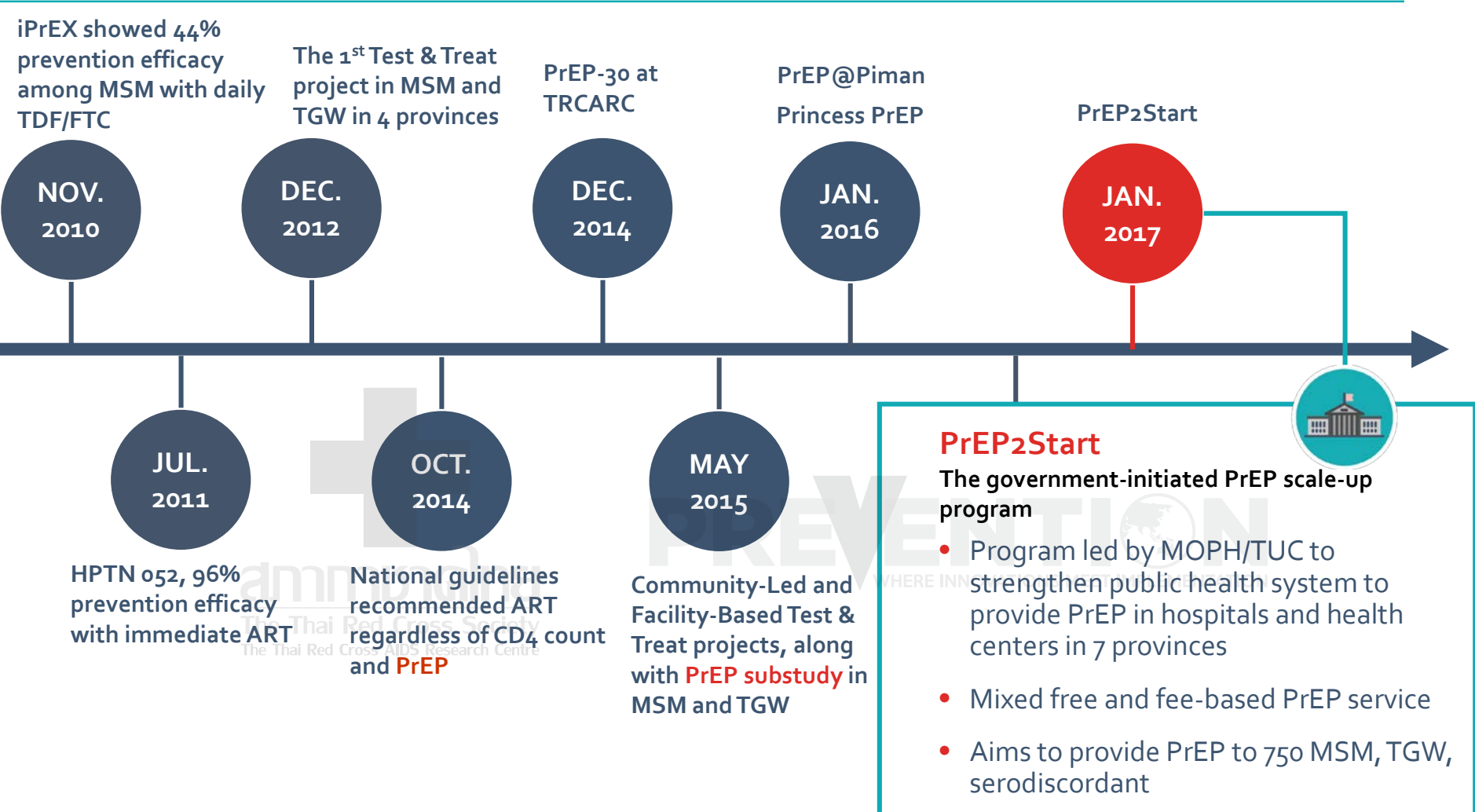


WHERE INNOVATIONS MEET IMPLEMENTATION

Thailand's PrEP Programs



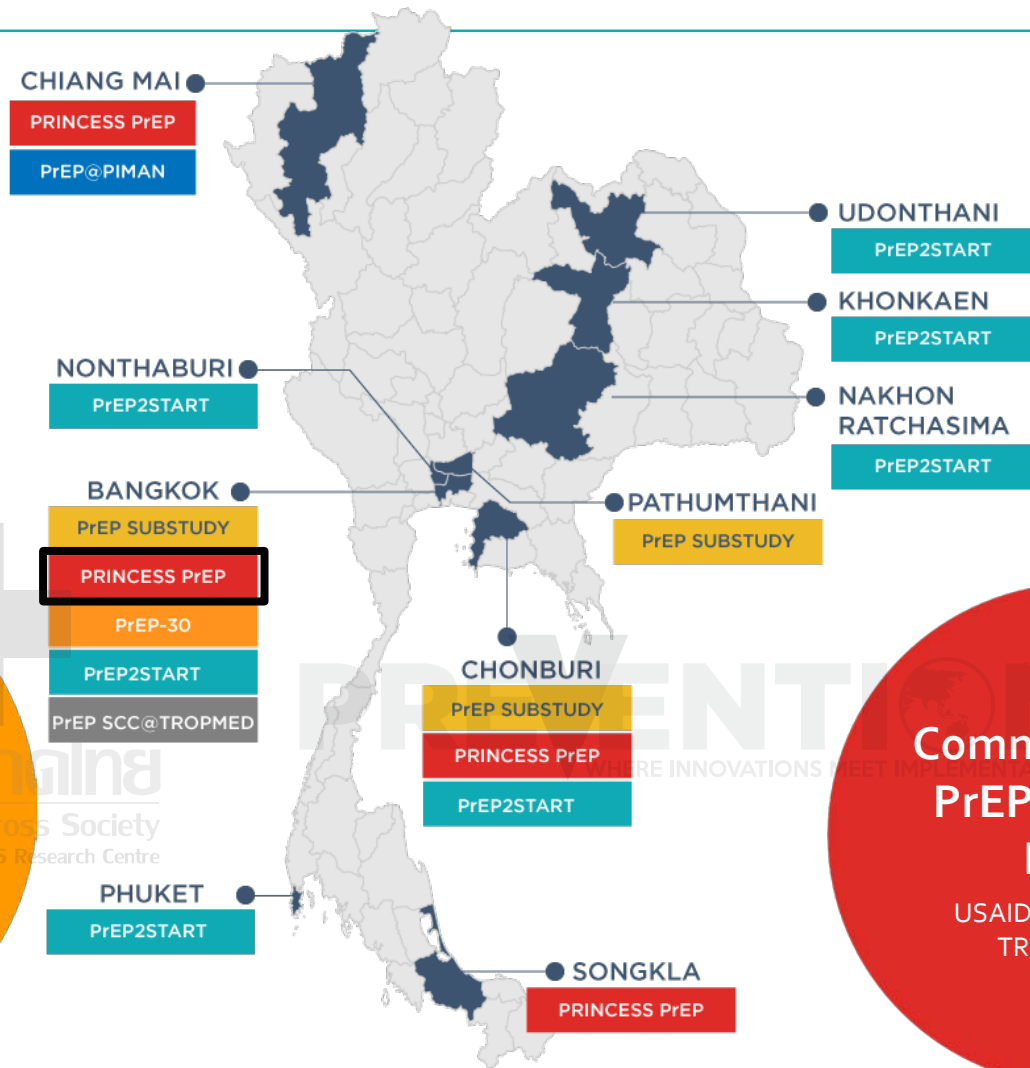
Thailand's PrEP Programs



Thailand's PrEP Programs

PrEP Implementation Research
 USAID LINKAGES and CDC KPIS funds

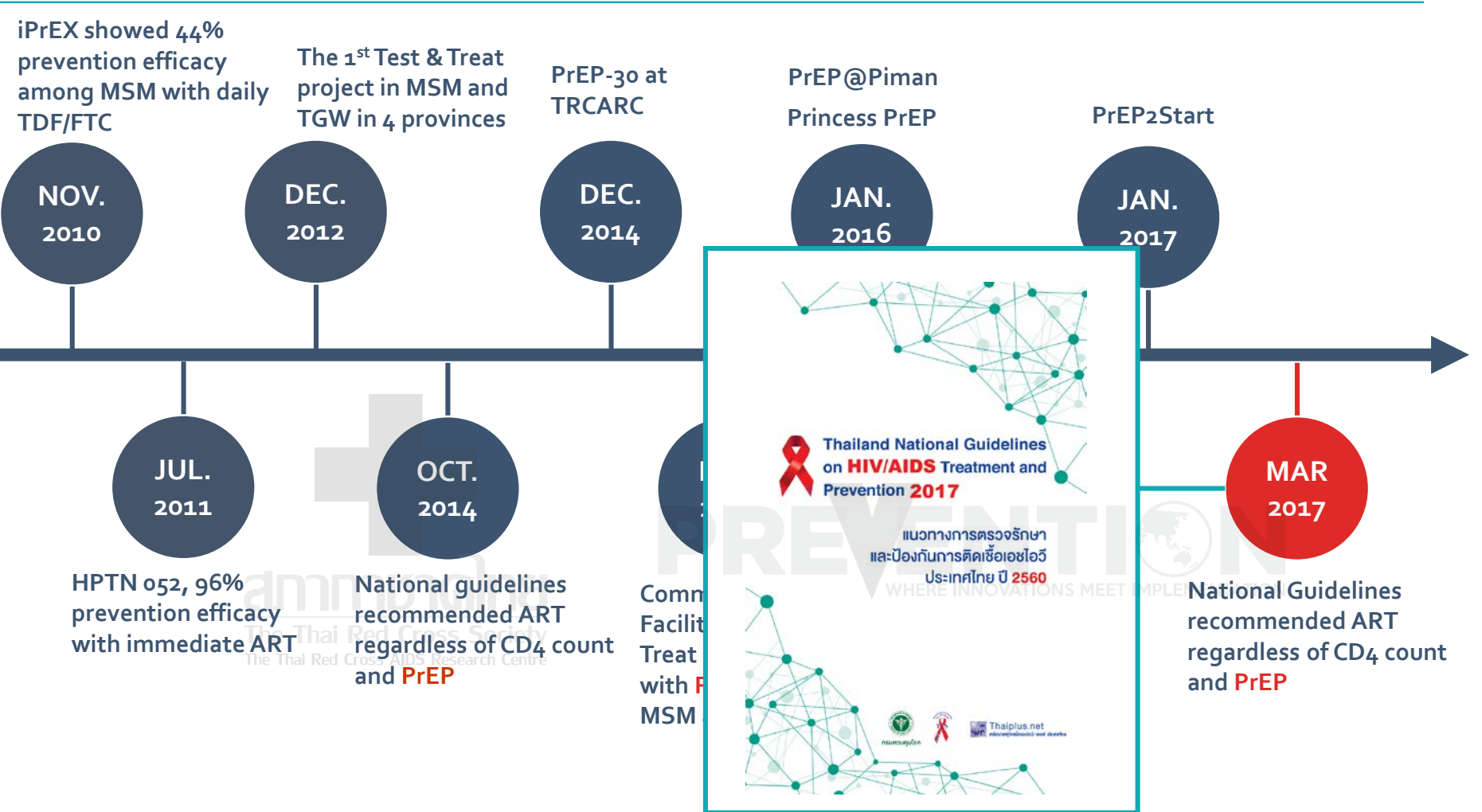
Facility-based PrEP by MOPH
 CDC technical support



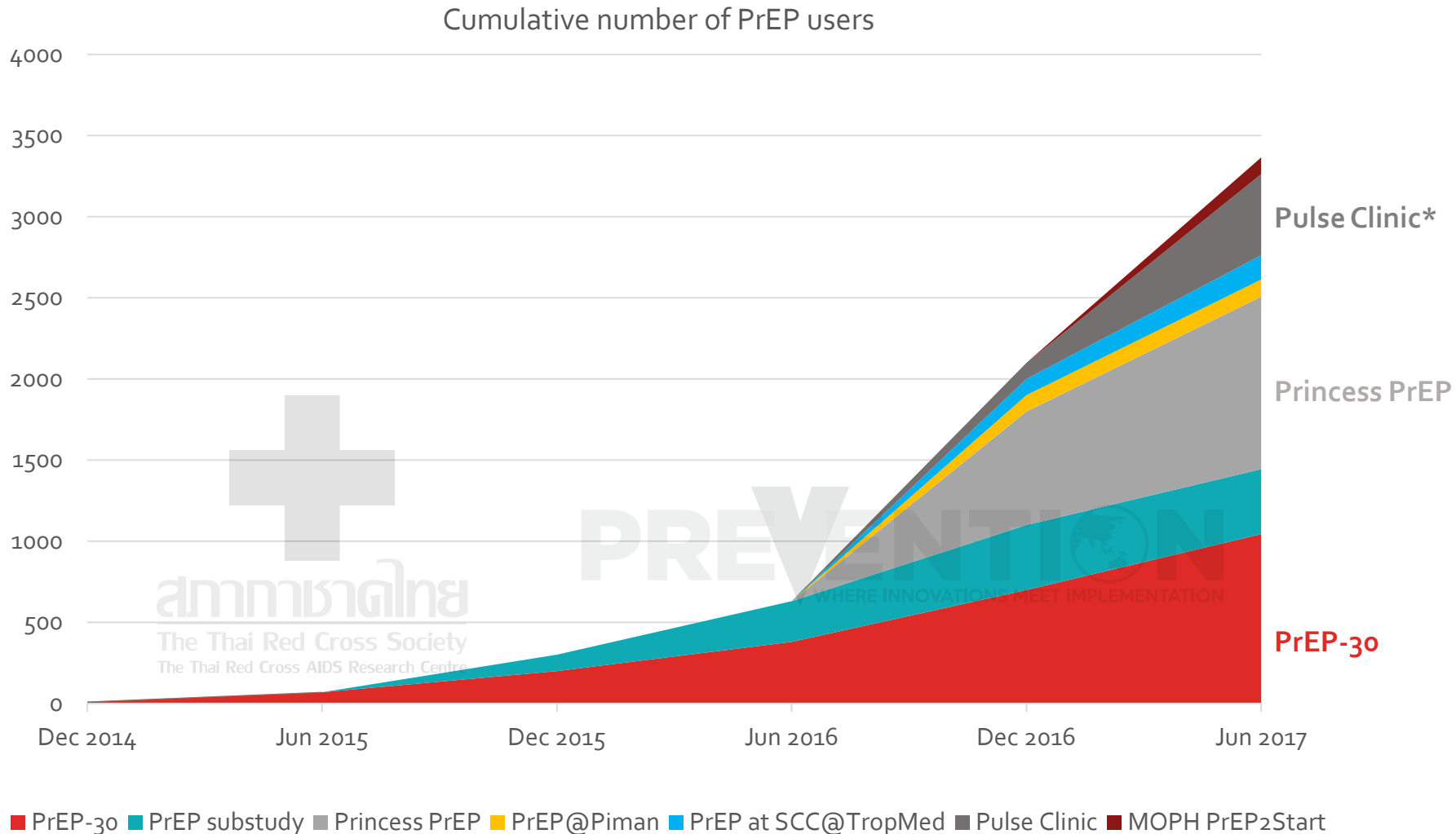
Fee-for-Service PrEP
 The Thai Red Cross Society
 The Thai Red Cross AIDS Research Centre

Community-Led PrEP (Princess PrEP)
 USAID LINKAGES and TRCARC funds

Thailand's PrEP Programs



Thailand's PrEP Programs



*From Community-based Test and Treat/PrEP and Princess PrEP databases

THANK YOU VERY MUCH

Disclaimer: This presentation is the Intellectual Property of Thai Red Cross AIDS Research Centre. It is intended for the use of meetings only. No part of this presentation may be reproduced, republished, distributed, displayed, transmitted or otherwise exploited in any form or by any means, electronic or mechanical, including photocopying, recording, or any information storage and retrieval system, without the prior direct permission in writing from Thai Red Cross AIDS Research Centre.